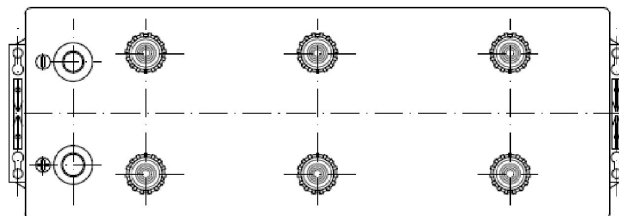
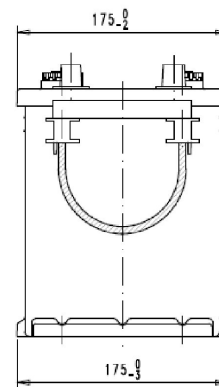
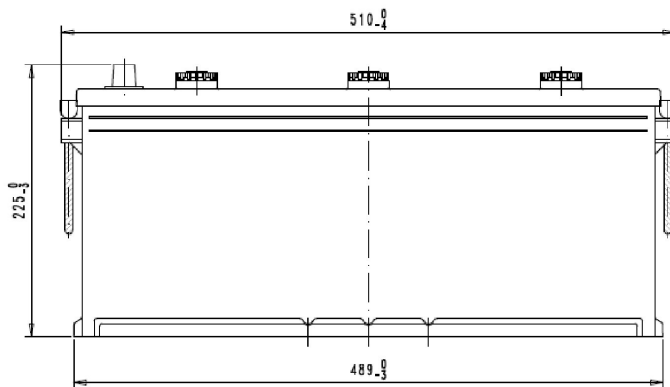


Central Article Code: D08081C01-A  
 Local Code: EG1406

Created: 07/03/2013  
 Modified: 31/07/2020



Final Outlook	D0801-A
Approval date	15/05/2010

### PERFORMANCES

Voltage (V):	12 V	
C20 (Ah):	140.0	20 h
Cranking (A):	800	EN
Charge:	WET	
Technology:	Vented/Flooded	
Grid:	Ca/Ca	
Vibration:	V2 (30Hz+/-2Hz/6g/2h)	
Endurance:	E2 (90 cycles@50%)	

### CONTAINER

Type:	D08	BLACK
Hold Down:	B3	
H.D. Adapter:	No	

### COVER

Type:	Flat/Screw	BLACK
Polarity:	ETN 4	
Terminals:	EN taper post	
Terminal Adapter:	No	
SOCI:	No	
Ventilation:	Independent	
Filter:	No	
Lateral Plug:	No	

### STD. DIMENSIONS

Length (mm ± 2):	510
Width (mm ± 2):	175
Height (mm ± 2):	225
Total Weight (kg ± 5%):	33.50

### PLUGS

Type:	6 x M27	BLACK
-------	---------	-------

### HANDLES

Type:	2 x Rope (Rigid holder)	BLACK
-------	-------------------------	-------

### OTHERS

Degassing Tube:	No
-----------------	----

Used for BOSCH

All figures show nominal values. Tolerances are according to EN50342 and applicable European Regulations.