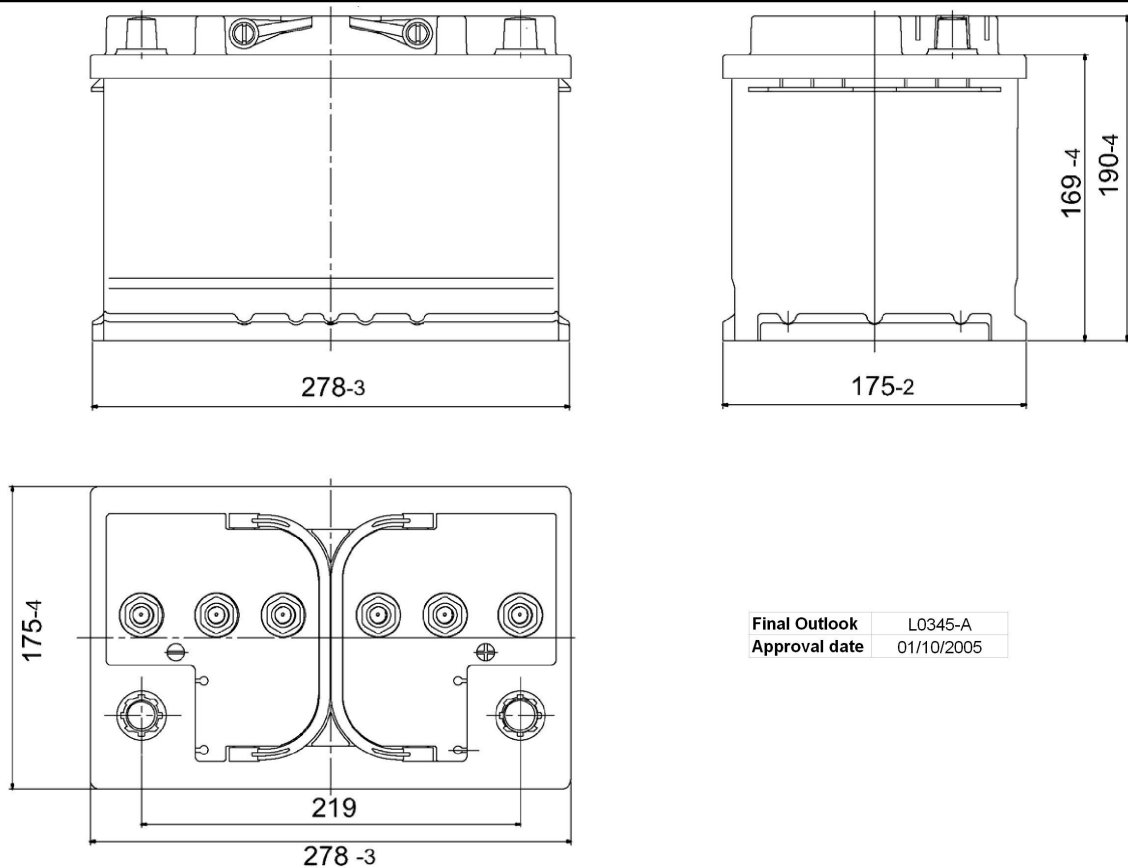


Central Article Code: L03046G45-A
 Local Code: ES650

Created: 08/09/2005
 Modified: 20/03/2019



PERFORMANCES

Voltage (V):	12 V
C20 (Ah):	56.0 20 h
Cranking (A):	0 EN
Charge:	CHARGED
Technology:	GEL
Grid:	Ca/Ca
Vibration:	V3 (30Hz+/-2Hz/6g/20h)
Endurance:	300 cycles@100%

STD. DIMENSIONS

Length (mm ± 2):	278
Width (mm ± 2):	175
Height (mm ± 2):	190
Total Weight (kg ± 5%):	20.80

All figures show nominal values. Tolerances are according to EN50342 and applicable European Regulations.

CONTAINER

Type:	L03 BLACK
Hold Down:	B13
H.D. Adapter:	No

COVER

Type:	DIN BLACK
Polarity:	ETN 0
Terminals:	EN taper post
Terminal Adapter:	No
SOCI:	No
Ventilation:	Independent
Filter:	No
Lateral Plug:	No

PLUGS

Type:	6 x Valve+Cover GREY MEDIUM
-------	----------------------------------

HANDLES

Type:	2 x Integrated BLACK
-------	---------------------------

OTHERS

Degassing Tube:	No
-----------------	----

DNV-GL type approved 2015