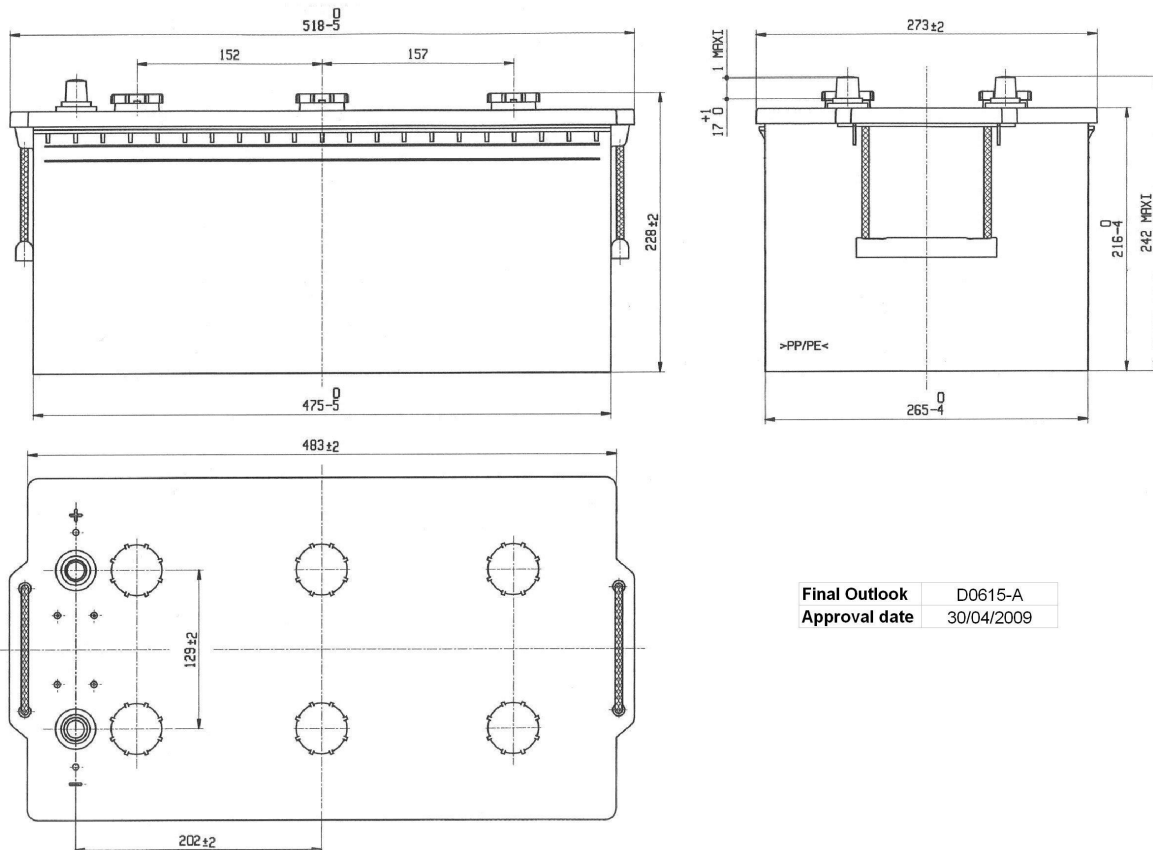


Central Article Code: D06110R15-A  
 Local Code: ET1600

Created: 31/03/2009  
 Modified: 05/09/2018



Final Outlook	D0615-A
Approval date	30/04/2009

## PERFORMANCES

Voltage (V):	12 V	
C20 (Ah):	230.0	20 h
Cranking (A):	1100	EN
Charge:	WET	
Technology:	Semi-Traction	
Grid:	4% Sb	
Vibration:	V3 (30Hz+/-2Hz/6g/20h)	
Endurance:	300 cycles@75%	

## STD. DIMENSIONS

Length (mm ± 2):	518
Width (mm ± 2):	274
Height (mm ± 2):	240
Total Weight (kg ± 5%):	64.80

All figures show nominal values. Tolerances are according to EN50342 and applicable European Regulations.

## CONTAINER

Type:	D06	WHITE
Hold Down:	B0	
H.D. Adapter:	No	

## COVER

Type:	Flat/Screw	WHITE
Polarity:	ETN 3	
Terminals:	EN taper post	
Terminal Adapter:	No	
SOCI:	No	
Ventilation:	Independent	
Filter:	No	
Lateral Plug:	No	

## PLUGS

Type:	6 x M27(STS)	RED
-------	--------------	-----

## HANDLES

Type:	2 x Rope (Rigid holder)	BLACK
-------	-------------------------	-------

## OTHERS

Degassing Tube:	No
-----------------	----